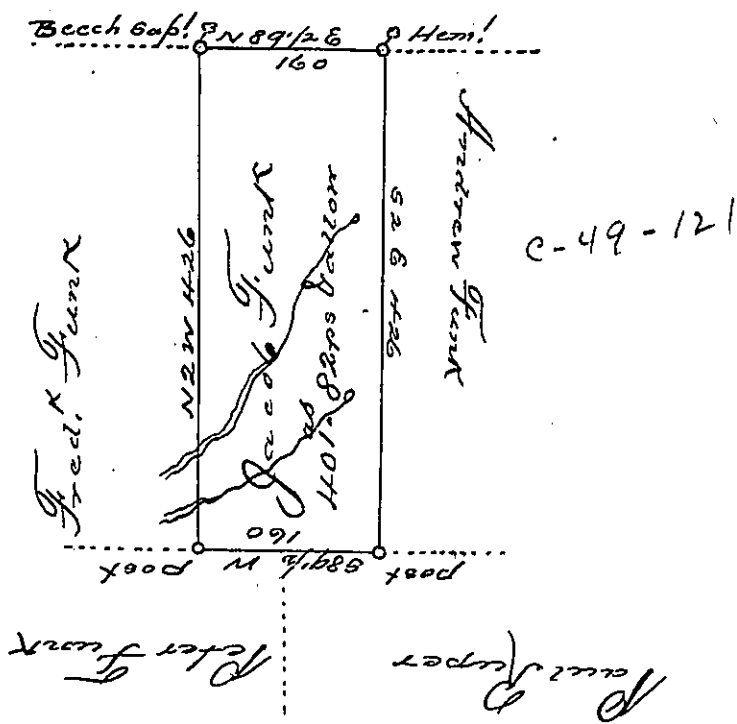


C-159-10V

Andrew Birk



A Draught of a tract of land called _____ situate in the County of Luzerne, adjoining Frederick Funk & others. Surveyed the 19 day of November 1792 for Jacob Funk, in pursuance of a warrant bearing date the 3. day of April 1792. Containing Four hundred and acres & eighty two perches & the usual allowance of six per cent for Roads &c.

Anty. Brothers D.S.

To
 Genl. Brodhead Esq.
 Surveyor General

IN TESTIMONY that the above is a copy of the original remaining on file in the Department of Internal Affairs of Pennsylvania, made conformably to an Act of Assembly approved the 16th day of February, 1833, I have hereunto set my Hand and caused the Seal of said Department to be affixed at Harrisburg, this twentieth day of September 1904.

George R. Brown
 Secretary of Internal Affairs.